

SHARP®

**TAKE YOUR BUSINESS
TO A BETTER PLACE.**



Digital
IMAGER™
Advanced Workgroup System

AR-337



WELCOME TO THE SHARP NETWORKPLACE™.

A new environment where the network and workplace intersect—linking multiple digital technologies that transform the workplace—and create more business power, more convenience, and greater productivity. Where people are empowered to combine their knowledge and intelligence, to build upon each other's ideas.

TAKE YOUR BUSINESS TO A BETTER PLACE.



THE SHARP DIGITAL IMAGER™: ADVANCED COPYING, PRINTING, AND FINISHING

Central to the swift operation of the Networkplace is Sharp's Advanced Digital Workgroup System, the Imager™. With digital copy, print, scan and document finishing capabilities, it provides simpler and faster ways to access, produce, change, process, and distribute documents. All to raise productivity and your documents to a whole new level.



THE SHARP AR-337 IMAGER™

ADVANCED WORKGROUP DIGITAL DOCUMENT SYSTEM

Streamlining your work flow has just gotten easier. Highly efficient and productive, the Sharp AR-337 Imager combines the performance of a digital copier, a workgroup printer and a high-speed network scanner. And with Sharp original software, you can do more than you ever imagined—right from the convenience of your desktop!

The Sharp AR-337 Imager is a powerful and reliable tool for today's busy workgroups. An advanced document management solution designed to handle all your copying, printing and finishing requirements, this workhorse can further improve your workflow with the choice of two network printing and scanning options.

Advanced digital performance that goes the distance

The Sharp AR-337 Imager is a productive 33ppm Digital Copier, and with the choice of two network print controllers, you also have a 33ppm 1200 dpi quality network laser printer. Now you can assemble finished documents faster than your typical laser printer. Bring more efficiency to your busy office or workgroup with the choice of two network scan servers which enable you to scan documents to your e-mail, desktop or to file. The AR-337 Imager is a complete

document system. With up to 5,050 sheets of online paper and professional finishing capabilities, you'll have the power you need to get the job done quickly and easily.

Performance that delivers

It's easy to appreciate the Sharp AR-337 Imager. Fast, high-quality copying, scanning and printing features will allow your office to operate more effectively. The AR-337 Imager: the ultra-efficient system that can expand as your needs grow.

Improve productivity with

"Scan once, print many"

You will notice the digital difference immediately with the Imager's "scan once, print many" technology. Now there's no need to stand and wait for documents. The Imager digitally scans your originals in one pass and gives them right back to you—enabling you to focus on other business while the Imager quickly enhances office productivity. And, for large documents, you can scan up to 120 images with the Imager's **Job Build** feature for maximum scanning functionality.

Unlimited multiple page sets

No more waiting! With the AR-337 Imager you can view a completed set, without having to wait for the entire job to print. Completed multiple page sets are delivered at top speed so you can get back to work. Since there are no sorter bins to empty, there is virtually no limit to the size of the set, or the number of sets you can create.

Digital
iMAGER™
Advanced Workgroup System

Many office workgroups would choose the Sharp AR-337 Imager for its copier performance alone. When you consider that it can also handle network printing, network scanning and finishing needs as well, the Imager is the clear choice.



ADVANCED DIGITAL TECHNOLOGY FOR ADVANCED, YET EASY DOCUMENT HANDLING

"Bring on the work"

Designed to keep up with the busiest of workgroups, the Sharp AR-337 Imager has an output speed of 33 pages per minute. No need to worry about big copy and print jobs holding up your office. And with its 4.3 GB hard drive, all your documents are handled with ease.

Consistent image quality—copy after copy...

The high-performance laser engine of the AR-337 Imager produces copies with a crisp 600 dpi resolution. Each original is scanned and converted into a digital image—ensuring that every page is generated with exceptional clarity. Sometimes the quality can even surpass the original. Can your copier do that?

Excellent reproduction

Reproductions of photographs, illustrations and graphics are richly detailed with the Imager's 256 shades of gray. There's even a mode that optimizes the output for combined photos and text. Your documents never looked better!

Advanced finishing capabilities made simple

Options at your fingertips! With the AR-337 Imager, choose from two optional finishers to easily assemble and deliver your documents. Collating, sorting and stapling are all automatically completed so all you have to do is pick up your finished sets. You can even access these professional finishing functions right from your desktop PC—putting productivity right at your fingertips.

High-speed tandem copying & printing

For a lightning-fast output rate of up to 66 pages per minute, you can easily connect two AR-337 Imagers together for tandem copying and printing. For copying, just feed the originals into one Imager, and the documents will automatically run on both. Tandem printing is also a snap... right from your desktop PC.

Expert handling of confidential documents

The **Confidential Print** function prohibits printing of designated documents until a Personal ID number is entered in both the print window and on the Imager's LCD panel.

The optional **Hard Disk Erase Security Kit** turns the Imager into a secure system for printing and copying of confidential documents. With two simple key functions, "Auto Clear" and "Clear All Data", users can avoid confidential documents ending up in the wrong person's hands.

Copy jobs are delivered to one tray, print jobs to another. Multiple-page sets are already collated, stapled, and stacked—ready for distribution.



Load up to 5,050 sheets of statement to ledger-size paper in the adjustable drawers, and go for days without a refill.

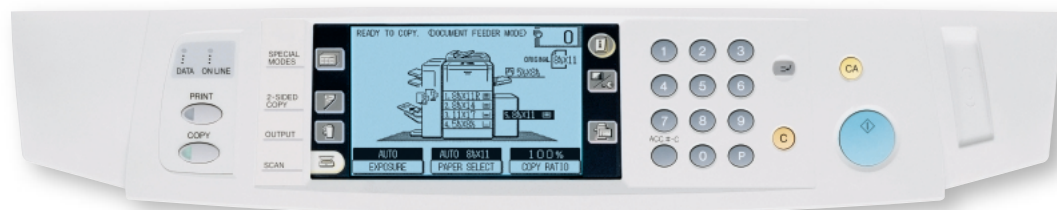


Easily connect two AR-337 Imagers together for tandem printing at a fast output rate of 66 pages per minute.



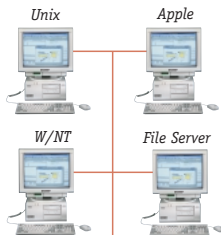
EASY-TO-USE CONTROLS

The user-friendly LCD panel easily guides users through features and options with simple prompts. The animated display logically leads you step by step through the selections. To avoid costly mistakes, you can easily confirm your selections with the touch of a key before you begin output.



MODULAR DESIGN AND EASY-TO-USE SOFTWARE MAKES THE AR-337 IMAGER YOUR COMPLETE DOCUMENT MANAGEMENT SOLUTION.

NETWORK PRINTING



A choice of two network print controllers provides the convenience of network connectivity. With 1200-dpi quality laser printing at 33 pages per minute, the AR-337 Imager is ideal for every workgroup.

Sharp AR-PB2A Print Controller

- Ideal for workgroups
- Includes **Printer Administration Utility Software** for Network Administrators to monitor any SNMP-compliant printer on the network
- Includes **Printer Status Monitor**, an application which enables users to view network printer conditions through an easy-to-use graphical interface. It even notifies you when your job is complete!



AR-LXII Print Controller



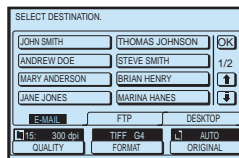
Fiery LXII Print Controller

- Ideal for midsize and larger businesses with high-volume printing and frequent use of complex graphics.



NETWORK SCANNING

Choose from two optional network scan servers for maximum productivity.

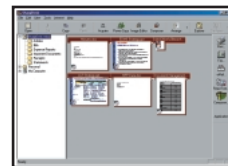


Sharp AR-NS1 Embedded Scanner

- Scan documents directly to your desktop, file server or e-mail.

SharpDesk™

- Software features include scanning, OCR, Image Viewer and more. A document can be e-mailed or posted to the web, or printed and professionally finished. You can also file, OCR print or link to your fax server right from your desktop.



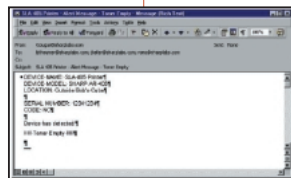
Axis 7000 Scan Server

- Digitally distribute paper-based documents across networks, within workgroups or around the world
- Configured with a keyboard for walk-up convenience
- Scan documents directly to your desktop to send to file, e-mail, or post to your web browser



Sharp Remote E-mail Diagnostics (R.E.D.)

- Advanced communication system for the network environment that allows information and device status to be sent over the Internet
- Use as a support tool for administrators inside a facility and for monitoring by a Sharp Authorized Dealer
- Provide the highest level of product support by sending an e-mail message at a set time schedule, or, when a certain event has occurred



MORE OUTPUT OPTIONS...TO MAKE YOUR DOCUMENTS LOOK THEIR BEST



Multiple pages per sheet



Make pamphlets easily



Automated page editing



Print on both sides



Auto stapler



Each job neatly separated

TECHNICAL SPECIFICATIONS

AR-337 IMAGER SPECIFICATIONS

| | |
|--------------------------------|--|
| Type: | Console |
| Copy System: | Dry, electrostatic |
| Originals: | Sheets, bound documents, photographs |
| Original Size: | Max. 11" x 17" |
| Copy Sizes: | Max. 11" x 17", min. 5½" x 8½" |
| Copying Speed: | 33 ppm (8½" x 11") (at 100% ratio) |
| Continuous Copy: | Max. 999 |
| Copy Ratio: | 25-800% in 1% increments Fixed presets: 25%, 50%, 64%, 77%, 95%, 100%, 121%, 129%, 141%, 200%, 400%, 800% |
| Automatic Duplex: | Unlimited (trayless) |
| First-Copy Time: | Approx. 5.2 sec. |
| Warm-Up Time: | Approx. 65 sec. |
| Original Feed System: | Electronic RDH (scan once, print many) 50-sheet Reversing Automatic Document Feeder (RADF) |
| Hard Drive: | 4.3 GB |
| Copy Paper Feed: | Two 500-sheet paper drawers with automatic feed; bypass tray with 50-sheet automatic feed capacity |
| Optional Paper Sources: | Stand with (1) 500-sheet drawer (AR-DE1N) 500-sheet drawer (AR-CS1) 3,000-sheet LCT (AR-LC1N) |
| Optional Output: | Three-tray finisher w/multi-position staple/stacker (AR-FN1N) Two-tray finisher w/ single position stapler/stacker (AR-FN2) Exit tray (AR-TE1) |
| Fusing System: | Heat rollers |
| Developer System: | Magnetic brush development |
| Exposure System: | Moving optical source, slit exposure (stationary platen) with automatic exposure function |
| Light Source: | Xenon lamp |
| Gradation: | 256 levels |
| Required Power Supply: | 120 V, 60 Hz, 13 A |
| Weight: | Approx. 217 lbs. |
| Copier Dimensions: | 23⅞"(W) x 27⅜"(D) x 29⅞"(H) |

OPTIONAL PRINT CONTROLLER SPECIFICATIONS

| | AR-LXII | AR-PB2A |
|-----------------------------|---|---|
| Printing Resolution: | 600 x 600 dpi | 600 x 600 dpi (1200 dpi-quality with smoothing) |
| PDL Support: | PCL5e Postscript Level 3 | PCL5e/6 Postscript Level 2 |
| Memory: | 32 MB Standard 64 MB Maximum | 16MB Standard; 80MB Maximum |
| CPU: | MIPS R5000 200 MHz Risc | MIPS R4700 150 MHz Risc |
| Engine Speed: | 33 ppm (8.5" x 11") | 33 ppm (8.5" x 11") |
| Fonts: | Postscript Type 1: 136 Fonts PCL Intellifont: 46 Fonts PCL TrueType: 19 Fonts Multiple Master: 2 Fonts | Postscript Type 1: 35 Fonts PCL Intellifont: 35 Fonts PCL TrueType: 10 Fonts Stroke Font: 1 Font LinePrinter (Bitmap): 1 Font |
| Maximum Print Size: | 11" x 17" | 11" x 17" |
| Duplex Printing: | Yes | Yes |
| Print Paper Sizes: | 5.5" x 8.5" (Invoice) 8.5" x 11" (Letter, Letter-R) 8.5" x 14" (Legal) 11" x 17" (Ledger) | 5.5" x 8.5" (Invoice) 8.5" x 11" (Letter, Letter-R) 8.5" x 14" (Legal) 11" x 17" (Ledger) |
| Sort Printing: | Sort, Staple sort. Available when AR-FN1N & AR-FN2 finisher is installed | Sort, Staple sort. Available when AR-FN1N & AR-FN2 finisher is installed |

Design and specifications are subject to change without notice.
Sharp is a registered trademark of Sharp Corporation.
All trademarks and registered trademarks are of their respective holders.

Digital
IMAGER™
Advanced Workgroup System

- ① Base unit (AR-337)
- ② Three-tray finisher (AR-FN1N)
- ③ Two-tray finisher (AR-FN2)
- ④ Stand with 500-sheet drawer (AR-DE1N)
- ⑤ 500-sheet drawer (AR-CS1)
- ⑥ 3,000-sheet LCT (AR-LC1N)



DOCUMENT
& NETWORK
SYSTEMS
OF AMERICA



SHARP PLAZA
MAHWAH, NJ 07430-2135
1-800-BE-SHARP
WWW.SHARP-USA.COM



As an ENERGY STAR® Partner,
SHARP has determined that this
product meets the ENERGY STAR®
guidelines for energy efficiency.

SHARP®
FROM SHARP MINDS
COME SHARP PRODUCTS™